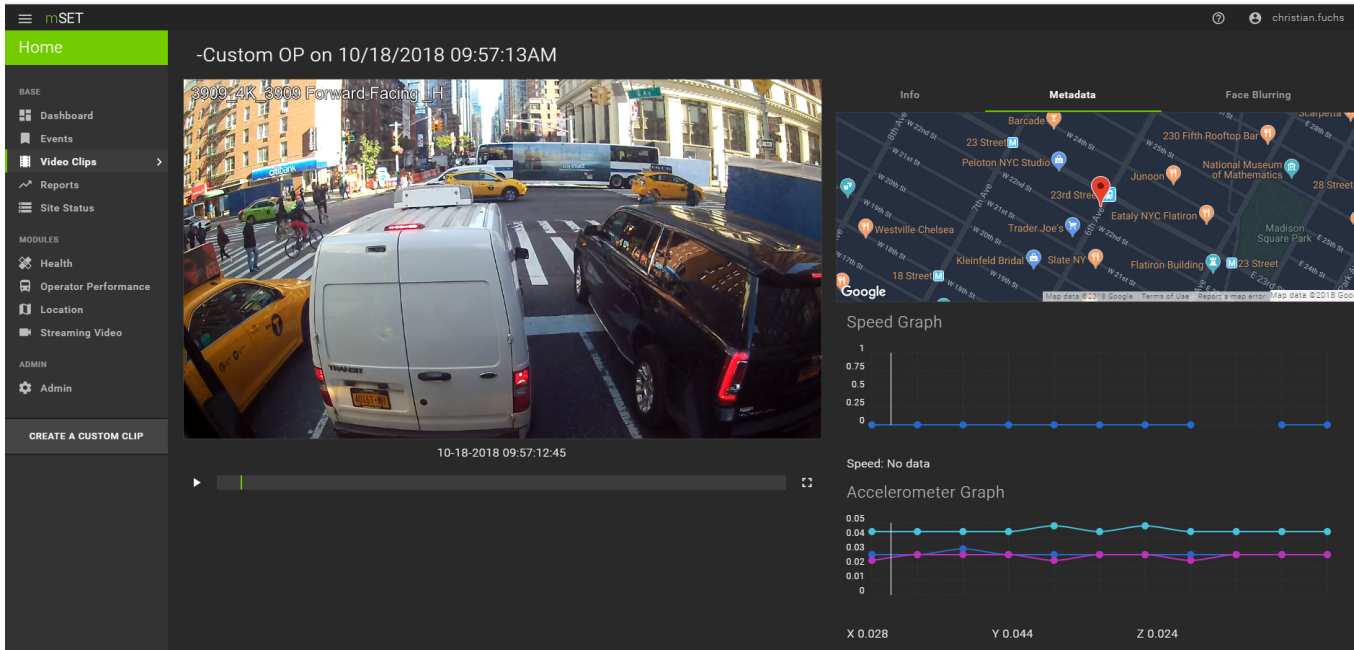


# mSET™ SOFTWARE

ON-BOARD VIDEO SECURITY MANAGEMENT SOLUTION



# mSET



## FEATURES

- mSET (Managing Safety and Efficiency in Transit) Software provides continuous accessibility to video and fleet information, even when vehicles aren't connected – improving security, maintenance, and management of fleet operations
- User-friendly, browser-based interface supports access from virtually any device
- Simplify troubleshooting with detailed health reports, resulting in faster resolution, greater maintenance efficiency, and improved up-time
- Compatible with all RoadRunner Recorders, mSET is a fleet-wide solution ideal for mixed fleets

## STREAMLINED, FLEET-WIDE MANAGEMENT

mSET Software provides all the information and tools required to proactively manage on-board video systems. Delivering streamlined management of multiple generations of RoadRunner on-board video security systems, mSET provides enhanced tools to download and archive video automatically or on demand. mSET also supports optimization of system health and maintenance, improves operator performance, enhances safety and mitigates risks.

## OPTIMIZED FOR TRANSIT AND MIXED FLEETS

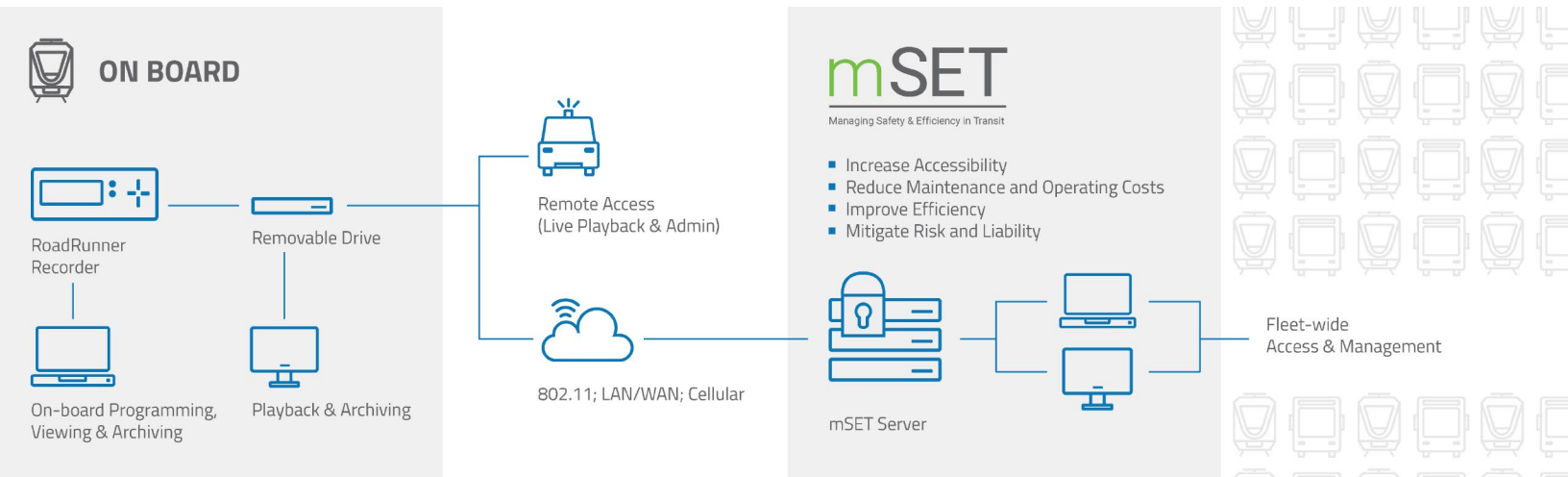
Building upon years of experience and feedback from transit bus and rail agencies around the globe, mSET is a multi-functional application that features an innovative, browser-based user interface designed to increase accessibility of video and data throughout transit operations.

## FLEXIBLE DEPLOYMENT OPTIONS

mSET can be provided as a fully hosted solution with or without optional review service, or deployed on-premise.

# INCLUDES ALL THE INFORMATION AND TOOLS NEEDED TO PROACTIVELY MANAGE ON-BOARD VIDEO SECURITY SYSTEMS

## CONNECTIVITY DIAGRAM



## OPTIMIZED FOR CONVENIENCE

- Easily manage on-board video components and the video and data captured from vehicles in the fleet
- Dashboard display provides easy access to desired data and detailed, exportable reports
- Intuitive, browser-based system provides easy access
- mSET's multi-depot function allows information from any designated garage or depot to be transmitted back to the primary mSET server. This is ideal for large fleets of vehicles that may be operating out of more than one location.

# mSET™ SOFTWARE

## ON-BOARD VIDEO SECURITY SYSTEM

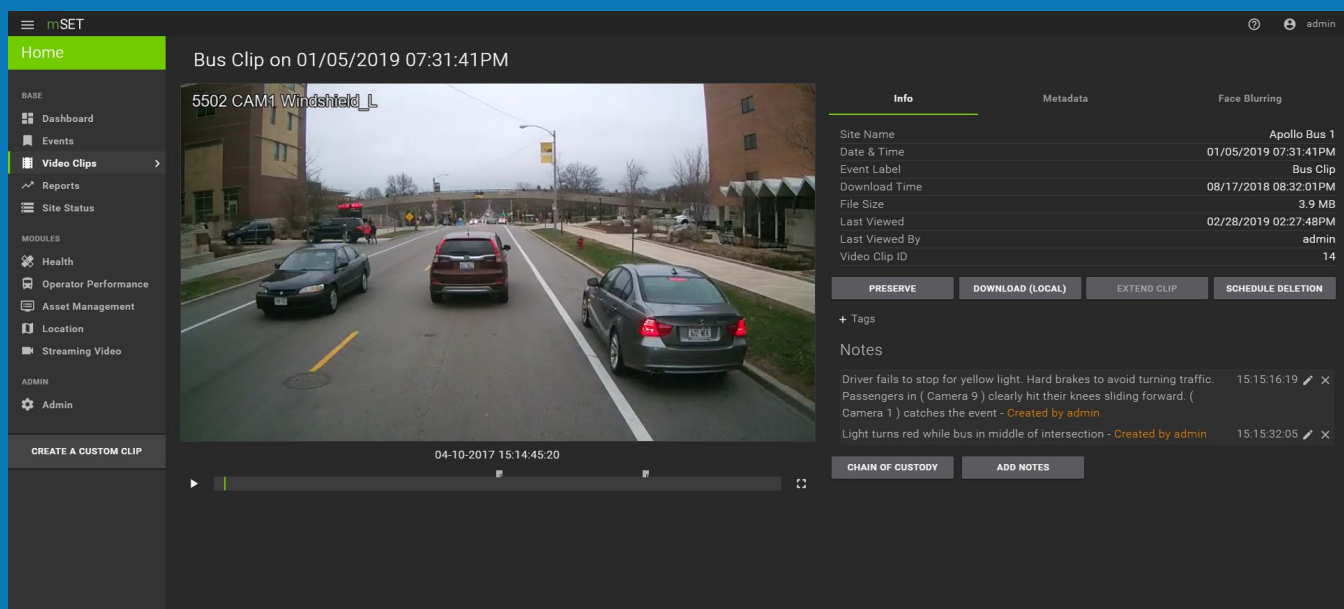
Intuitive and easy-to-use software provides full management of mixed fleets, live video streaming and health information.

### INCREASE ACCESSIBILITY

- Video and fleet information is available, even when vehicles are outside of network range – improving security, maintenance, and management
- Instant video playback enables users to easily identify clips of interest by previewing the video and metadata
- Simplify the management of video data with an intuitive user interface to streamline workflow and provide the most important information at a glance
- Dashboard provides easy access to the most critical information

### MANAGE SECURE VIDEO EVIDENCE

- Manage automatically configured or on-demand downloads – the system supports simultaneous download requests of multiple video clips from multiple users
- Classify video clips with customized tags to easily group and locate video clips, allowing users to organize video evidence and manage the workflow of video review
- Protected clips can be easily confirmed as authentic and therefore admissible for courtroom evidence
- Chain of custody reports identify all activities related to each video clip
- To protect the privacy of individuals in video clips, the intelligent tracking feature allows users to select faces to be automatically blurred throughout the entire video clip



# mSET™ SOFTWARE

## ON-BOARD VIDEO SECURITY SYSTEM

mSET delivers a seamless and scalable fleet-wide solution for mixed fleets, and is easily customizable with a variety of modules.

### ADVANCED SEARCHING

The optional Location module enhances search capabilities and provides live location of vehicles.

- Easily obtain critical footage from events even when a specific time or vehicle number is unknown – video clips can be requested by a mapped location across the entire fleet
- Additional search parameters include vehicle number, event, and vehicle speed

### IMPROVE EFFICIENCY AND UP-TIME

System health information is easily accessible in the optional Health module to simplify troubleshooting and facilitate maintenance.

- Monitor system health through email notifications and dashboard data to proactively plan maintenance and ensure peak efficiency and reliability throughout the fleet
- Quickly and easily download clips associated with Recorder and camera health events to help determine the cause of system failures and identify incidents of vandalism and tampering
- Fleet-wide monitoring ensures proper operation and eliminates manual system checks

### MANAGE ASSETS AND MAINTENANCE

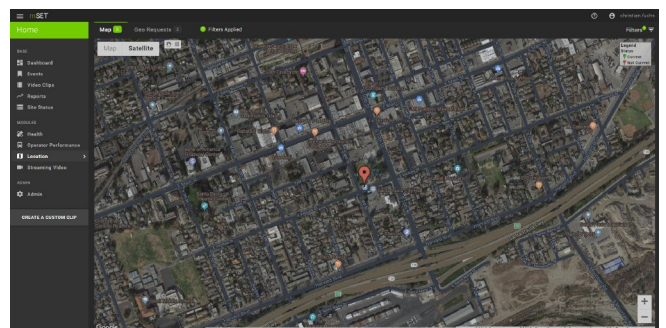
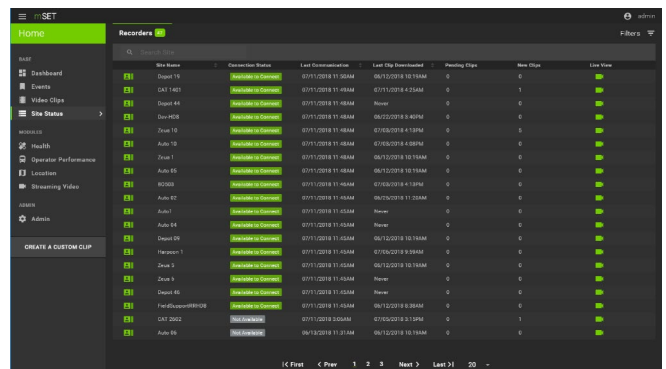
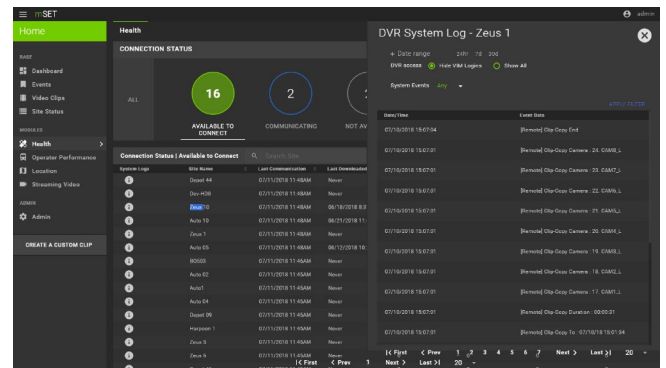
The Asset Management module supports complete tracking and management of components

- Easily create and assign work orders and schedule preventative maintenance to ensure efficient fleet management
- Track assets and life cycles of equipment
- User-based permission levels ensure controlled access to assets, work orders and assignments

### ENHANCE LIVE VIDEO STREAMING

An optional enhancement for systems with cellular capabilities – the Streaming Video module supports large-scale remote viewing at the highest quality.

- Multiple users can view live video simultaneously to address critical events occurring in real time



- The mSET™ Operator Performance module provides a comprehensive solution for transit agencies to improve safety and reduce liability claims
- Using organized coaching workflows and event-based video clips, transit agencies can effectively capture daily driving habits to identify trends and risks, provide targeted and individualized training, and measure performance over time
- Designed specifically for transit, the system supports up to 16 cameras providing full, comprehensive coverage of the interior and exterior of vehicles

## IMPROVE SAFETY, MITIGATE RISK

Capture the daily driving habits of operators and score behaviors based on your customized guidelines, to quickly identify and mitigate risks.

The mSET Operator Performance Module enables you to compile operator scorecards with a comprehensive history of operator activities, previous coaching sessions, and dynamic scores with weighted time values to track performance improvements or areas for development.

Configurable scoring accommodates specific agency priorities and reduces subjectivity, enabling you to efficiently address key performance issues with tools that provide support to coach and train operators.

Whether hosted or on-premise, agencies can review their own clips, or leverage Luminator's review service with transit-certified, objective reviewers led by a DOT Certified Transit Instructor.

Reduce liability associated with risky operator behavior by capturing events. The workflow in mSET Software facilitates the event reporting and coaching process.

# mSET™ SOFTWARE

## ON-BOARD VIDEO SECURITY SYSTEM

### HOSTED OR ON-PREMISE

- Hosted deployments eliminate on-site hardware costs and IT resources, with hardware, storage, and infrastructure managed by Luminator
- With an on-premise deployment, all software features and modules are available to agencies who wish to host the application and manage their data and hardware on-site
- The workflows and storage options within mSET allow agencies to easily configure and archive video storage to meet retention requirements

## INTELLIGENCE, SAFETY AND EFFICIENCY IN TRANSIT

### A CUSTOMIZABLE, MODULAR SOLUTION

#### Modules and Feature Highlights

mSET Base (Required)	Download video clips on-demand and access vehicle information including connection status
SmartClip Module	Automatic download of video clips with classification workflow and chain of custody reports Face blurring with intelligent tracking, for privacy protection
Health Module	System health dashboard, detailed reports and email notification of system errors
Location Module	View live location of vehicle with instant access to live streams (when equipped w/ Streaming Video) Request video clips from map location and view real-time location data of all vehicles in the fleet
Streaming Video	Instant access to live video with simultaneous real-time viewing for critical events
Asset Management	Track assets, maintenance dates, serial numbers Proactively schedule preventative maintenance, assign, complete and track service records
Operator Performance	Track risky and positive behavior patterns over time Facilitate coaching and address key performance indicators

Features and Specifications are Subject to Change without Notice | 202201\_BOVS2002R04



**LUMINATOR**  
TECHNOLOGY GROUP

INTELLIGENCE, SAFETY AND  
EFFICIENCY IN TRANSIT